

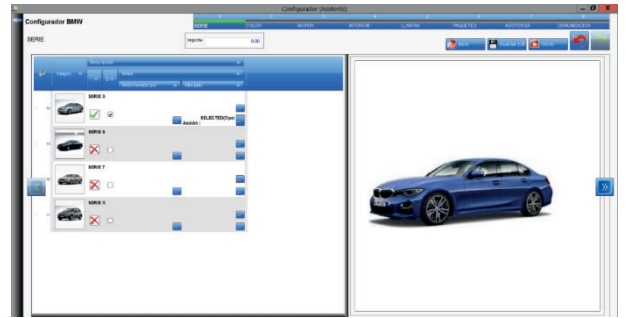
APP's

NEW IDEAS, NEW APPs

Our customers and partners are the best experts in the functional and technological needs that companies require, and at RPS Next we want to be permeable and agile in responding to these demands, which will benefit all of us who make up the RPS Next family.

At RPS Next we have developed a new deployment model, which will allow us to publish new applications, progressively, within approximately 6 months. We have named these new applications **Apps**.

Today this is the list of confirmed Apps and their indicative publication date:



2020

- **Cash-Flow:** Projection of the cash-flow where can include several inputs-outputs (payroll, loans, etc.)
- **ShopFloor Maintenance (GMAO)** Documentation, Maintenance Orders, tickets; time and material allocation.
- **GASVI:** Allocation of expenses to projects, opportunities and Maintenance orders. Ticket accounting. Payment of expenses to employee.
- **Addin Outlook:** New more flexible connector. It allows generating opportunities, activities, tickets, etc. from the mail.
- **OCR Framework:** Import of purchase invoices in pdf. Automatic registration of expense tickets.
- **ePlan Integration:** Integration with the ePlan platform. Import electrical materials to RPS Next.
- **App Employees:** Employees checkin checkouts, planned and unplanned stops.
- **Inspection OCR.** Reads dimensional controls of PDF drawings and uploads RPS control patterns. Graphical display of the status of inspections.

2021

- **EDI:** Mapping tool capable of reading any EDIFACT file format: Sales Orders; Generation of Delivery Notes and Sales Invoices.
- **Supplier Integration Platform:** Integration with the main suppliers (FESTO, SIEMENS, RS Components, FARNELL). Automatic update of references, prices, etc.
- **IMPORT TOOL** Import tool from any entity, property mapping.
- **RPS Next CAD:** Export to neutral files. Migration of files with versions.